

TSH BERKSHIRE NEWSLETTER



Our newsletter includes information about the following...

BRAND NEW!

ITT

ECF

Revised ITT and ECF Framework

Appropriate Body

NPQ

Other CPD

TSH Berkshire Conference

A warm welcome from TSH Berkshire...



Janet Roberts
Director

janetroberts@lgs.slough.sch.uk

The end of this academic year marks the end of our first designation period as a Teaching School Hub. We have started planning for the next designation period, and look forward to being able to continue to support schools across Berkshire over the next four years.



Jenny Evans
Deputy Director

jevans@willink.w-berks.sch.uk

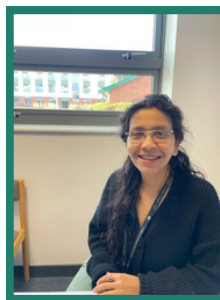


Susan Watson
Operations Manager

susanwatson@lgs.slough.sch.uk



Helen Jonas
ITT Relationships Manager
helenjonas@tshberkshire.org



Noopur Dutta
NPQ Administrator
noopurdutta@lgs.slough.sch.uk



Nina Panesar
Marketing & Comms Officer
ninapanesar@lgs.slough.sch.uk





We know that the end of the summer term is incredibly busy in schools, and we hope that the next few weeks go smoothly, and that everyone in our school communities has a relaxing summer break when we get there. We have done quite a lot of work on our website over the last few months, and there are lots of support materials for schools, and information about various aspects of our remit, so please do have a look [here](#).

Headteacher Briefing

We ran a briefing session for headteachers in early June and really appreciated the fact that so many heads and senior leaders gave up their time to attend. If you weren't able to join the session, but would like to watch the recording click [here](#).

School Leader Satisfaction Survey

As part of our reporting back to the DfE, we have to conduct a "school leader satisfaction" survey each year. We have already circulated this to schools, and it only requires one response per school. If no one in your school has filled it in yet, we would be very grateful if a member of the senior leadership team could complete the survey, which should only take about 5-10 minutes. The link to the form is [here](#).



We would like to include a short **case study** in our newsletters, highlighting good practice in our schools and how elements of the "Golden Thread" are having an impact. We start with this example from Sue Matthews, Assistant Headteacher at Blessed Hugh Farringdon School in Reading talking about the impact of the NPQs in her school.

“NPQs are an extremely useful tool in developing our staff and we have seen the benefits in our school, including increased confidence, improved retention, and enhanced professional impact. It makes staff feel valued, and makes them more likely to contribute to our journey. And it's not just about us - it's about us supporting development in the profession. So yes, we do have members of staff who move on, and that does mean that we lose their skills. But at the same time we get great pride out of the work that we have done to support them, to help them to be successful in securing those new roles.

One member of staff who was new to a leadership role, completed a specialist NPQ and it's very evident how that has impacted on her effectiveness and I've seen her developing a broader understanding of a range of useful strategies. We recently appointed a very experienced colleague to a leadership position and the NPQ programme has been hugely beneficial in raising her confidence, increasing her understanding of the role and therefore impacting effectively on her ability to be successful in that position.

Going forward with the changes to funding, we will need to adopt a more strategic approach, considering the impact on the retention of staff and their subsequent career development. We will consider the balance between developing staff for the school's benefit and supporting their career progression in the wider profession but we would still we would still aim to put the right people on the right course.”





ITT

TSH Berks has had a busy term with regards to ITT. We have had some really interesting results from our 'School ITT Engagement' survey that show just how proactive our region's schools are in offering placements for a wide range of ITT routes, phases and subjects. Many thanks indeed to all of the schools that completed the survey, and we hope you found the summary of our findings interesting. Through the survey, our liaison work with our Accredited Providers and with such organisations as the National Association of Small Schools, we now have an 'evidence-based' knowledge of our ITT landscape and a clear idea of the strengths and challenges faced by our schools and providers. For 2024/5, we are building a strategy that allows us to continue to build relationships with all our region's schools.



- ✓ Continue to build relationships with all our region's schools.
- ✓ Work collaboratively with schools and providers to increase local recruitment to ITT.
- ✓ Offer support to schools who would otherwise find placing a trainee a challenge.
- ✓ Play our part in the excellent teacher training opportunities that exist in our region.

If you would like to get in touch with us regarding your ITT position please email helenjonas@tshberkshire.org

The Institute of Education (IoE) University of Reading

Continue your professional development with the Institute of Education!

Develop and progress in your educational career. The Institute of Education, University of Reading offer a wide range of excellent opportunities available that can support you in your (and your staff's) professional development. Suitable for teachers and education professionals of all levels. Find out more about:

- [MA Education specialist pathway](#)
- [Postgraduate Certificate in Education \(Reflective Practice\)](#)
- [Assessment Only route into teaching](#)
- [Initial teacher training](#)
- Open online courses - click [here](#) to find out more about open online courses and all of the CPD above.



ECF

The second cohort of ECTs are just coming to the end of the programme, and it was lovely to welcome so many of them to our celebration events last week.

The content covered during the training sessions was relevant, practical, and insightful. The knowledge and skills I acquired during these sessions have been invaluable in shaping my teaching practice and fostering my professional growth.



The programme continues to support my development as a teacher within my first years. It offers points of reflection and target setting to continually evaluate my practice.

The programme has supported me and allowed me to grow effectively as a practitioner, giving me expertise in a multitude of areas.



Great eye opening and interactive sessions which allowed me to understand different scenarios from different schools as well different experiences. Good to hear from other departmental areas and their experiences too.

We are now in the process of setting up the programme for next academic year. Local Area Coordinators will be asking for details of ECTs and mentors to organise the cluster groups. The [DfE Registration Service](#) is now open for induction tutors to register new mentors and ECTs.

If you have **an ECT for the first time in September**, and would like to use us as your ECF provider, then please **contact us**, or **sign up via the form [here](#)**.



Appropriate Body

From September 2024 local authorities will no longer be able to offer the Appropriate Body Service which means that **all new ECTs joining your school will need to be registered with a Teaching School Hub** as their Appropriate Body. This also includes any year 2 ECTs who are currently registered with the LA, but whose induction will be extended into next academic year.

If your school has not used our Appropriate Body Service this academic year, but you will be registering ECTs with us in September, please **look at our website [here](#)** for information, or **sign up via our SLA [here](#)**.



NPQ

This has been our busiest NPQ term yet with over **300 participants currently studying one of our eight courses**. Our huge **congratulations to the cohort 4 specialist** participants who have recently received their results earlier this term, particularly to those who scored full marks on their assessment. This is a real achievement, born out of hard work, but also testament to the leadership cultures of the schools we work with. Our Cohort 3 leadership participants are expecting their results at the end of this month, and we wish them luck.

We are increasingly trying to ascertain an awareness of the real **impact NPQs are having in schools** - corresponding with a piece of research on retention being done by UCL - and have recently begun a sequence of interviews with some of our most engaged schools to understand better what the medium term and long term impacts are. We are seeking to encourage Headteachers to be strategic about how they utilise NPQs to ensure they are part of the school's CPD strategy and that they tie in with the school's development priorities.

Our lead provider UCL's USP is the **implementation project** and this presents an opportunity for participants to 'activate their learning' but should also offer schools additional leadership capacity and exciting momentum for positive change.

Of course we have to mention the **funding for Autumn '24**. We were restricted in what we could communicate to schools in the pre-election period, but hopefully schools are aware of the change to funding and the DfE's decision to withdraw the full funding and instead offer scholarship places to those schools with the highest proportion of disadvantaged students. If you are unaware whether or not your school is eligible for scholarship funding please don't hesitate to contact us or look on the DfE website **[here](#)**. It is a matter of urgency as **scholarship places are being offered on a first come first served basis**.

The NPQ Senco will come on line in Autumn 2024. This NPQ will become the mandatory qualification for SENCOs from September 2024. For more information about the courses we offer please see our website **[here](#)**.

We are looking forward to welcoming another 100+ colleagues onto the autumn cohort and hope their experiences will be as positive as our recent graduates':

“The most useful thing has been working with colleagues from different settings, learning about new research and feeling empowered by it.”



“I have grown in confidence of what is expected of a middle leader.”



“I now have a more strategic awareness of the role leaders play in delivering change across a setting.”





“

I have learnt so much and grown in confidence, it is well worth it as it broadens your outlook!

”

“

This course has given me an opportunity to consider my own approaches and has given me a bank of evidence and experience for future use.

”

“

Friendly and knowledgeable facilitators, I obtained useful tools which I can apply on a daily basis.

”



“

The course has broadened my confidence levels in practice, it's been fantastic!

”

“

It's excellent, professional, relevant, structured well, with flexible working deadlines.

”



TSH Berkshire Conference

It was great to welcome so many of our NPQ and ECF facilitators to what has become an annual conference at Wellington College last month. This year we also invited induction tutors and everyone benefitted from the input from our presenters. Nicolle Browning, Headteacher at The Willink School started the day with an engaging and thought provoking session on "Managing Workload and Stress – how can we look after ourselves and those we work with?" The rest of the day was delivered by two of the programme leads from UCL focussing on developing facilitation skills. The day was extremely well received by all, and hopefully gave participants lots of food for thought as well as strategies they can implement, whatever their role.





“This is so what I needed to hear today. I cannot thank you enough inspiring session!”

“Great space to reflect on my role as a facilitator”

“Really enjoyed the opportunity to network and share.”

“Good research informed stuff. Enjoyed thinking through adult vs child learning”



Other CPD

DfE Curriculum Hubs

AMSP (Advanced Maths) - For all the updates from the Advanced Maths Support Programme, click [here](#). The AMSP has a number of resources available to support your students in their transition to Level 3 Maths. There are options available for A-Level mathematics, and Core Mathematics, see [here](#). For a free online course for students who are preparing to start university courses in Mathematics or related courses click [here](#).

AMSP are excited to announce the return of our Extended Professional Development Courses for the new academic year, click [here](#) for further information.

Maths Hub Workgroups - Level 3 Maths Work Groups are sustained professional development programmes, run in partnership by Maths Hubs and the AMSP. Each Work Group is an ongoing collaboration between teachers from local schools and colleges led by an expert in maths professional development. Find out about Developing A Level Pedagogy Work Groups [here](#) and Developing Core Maths Pedagogy Work Groups [here](#). For more information and to register your interest please visit your local maths hub webpage or contact the AMSP.

➡ Mobius Maths Hub: <https://www.mobiusmathshub.org.uk/index.asp>
➡ BBO Maths Hub: <https://bbomathshub.org.uk/>

To stay up to date with the events offered by the AMSP nationally and locally please sign up to their mailing list [here](#). For more information about these or any support you might want from the AMSP please contact Catherine Joyce, Area Coordinator: Berkshire, Hampshire and Surrey [here](#).



Science Hub - The Science Hub is focused on supporting effective teaching and learning across our local area using a team of expert science teachers. It will be continuing as an independent, non-profit organisation to support all your science teaching and learning needs from Sept 24 despite the withdrawal of funding for local Science Learning Partnerships by the DfE. Please support them by attending their courses. The Science Hub have made the pricing of all our courses as low as possible to enable you to be able to attend.

Click [here](#) to view all of their exciting courses for both Primary and Secondary Teachers and for Technicians.

The Science Hubs CPD offer is also on eventbrite, you can follow them [here](#). These are the most cost effective ways for you to have a year of science CPD. There are four different exciting packages for your schools to sign up to. To find out more information about the packages on offer, click [here](#). You can book your package [here](#).

Computing Hub - The Big Primary Computing Leadership Conference for Primary Schools as well as The Big Primary Computing Leadership Conference for Secondary Schools are both taking place on the 12th December from 09.00 to 16.00 at Oxford Brookes University. To find out more about both of these events and how to book your place, click [here](#).

Click [here](#) to find out about I Belong: encouraging girls into computer science. To achieve the desired outcomes, the Computing Hub is encouraging every school to provide an event to encourage year 8 girls to see themselves able and inspired to take GCSE computer science. As such, they are holding an event at Bletchley park on 27th Sept 2024 for Year 8 girls in order to achieve this. Places are likely to book very quickly so please take a look today. Find out more [here](#).

If your school is needing to upskill the subject knowledge of non-computing teachers to be able to teach computing next year, please email the Computing Hub for support [here](#). They can help your teachers by providing subject knowledge CPD either face-to-face or visit their website for all the remote courses available [here](#).

The Computing hub have partnered with OTSA to run some remote twilight computing courses for Primary and Secondary teachers. Please take a look at their website [here](#).

BBO Maths Hub - To view the latest edition of BBO's newsletter, please either [download the pdf](#) or view it online [here](#). For information about BBO Maths free SATS analysis workshop for Maths Leaders, Year 6 and 7 teachers click [here](#). You can register via their website [here](#).

The Teaching for Mastery Programme is a professional development opportunity designed to support teachers in state-funded schools to develop best practice in maths in your school. To find out more about how your school can get involved in this fully funded project in 2024/25, head to the relevant page on our website using the links below:

 [Primary Teaching for Mastery – Development](#)

 [Secondary Teaching for Mastery - Development](#)

For further information about submitting your application to join the Teaching for Mastery Development Project in 2024/25, click [here](#).

To find out about all of BBO Maths hubs work groups and opportunities for 2024/25 click [here](#), please note that all of the work groups are free. You can contact BBO Maths hub via email [here](#) to discuss the best programme for you and your department.

Mobius Maths Hub - Mobius Maths Hubs are excited to offer an expanded range of Primary Work Groups, click [here](#) to find out more and register.

Mobius Maths Hub are also offering the Teaching for Mastery Programme, which is a professional development opportunity designed to support teachers to develop best practice in maths in schools, click [here](#) to register.

Mobius Maths Hub is also offering an expanded range of Secondary and Post-16 Work Groups, click [here](#) to find out more.



Behaviour Hub - It has been an exciting year for both Maiden Erlegh School and Maiden Erlegh Trust in their work with the Behaviour Hubs programme. The programme supports schools and its leaders by helping them to create calm, safe and supportive environments – with pupils in schools and ready to learn. Behaviour Hub has helped more than 650 schools and multi-academy trusts across all provisions to make sustainable and impactful changes to their behaviour culture. Maiden Erlegh school has supported over 20 schools and 7 multi academy trusts.

This year this has seen the Behaviour Hub support 5 schools, seeing three of these graduate and two more new to the programme. They support schools by providing supportive coaching and onsite school improvement work. It has also seen them support 3 MAT's on wider trust improvement work, with notable working relationships built with the Nova Education Trust.

The Behaviour Hub are looking forward to the continued school to school work with Buckinghamshire School and Carrington School; helping and supporting them through to their graduation of the programme in December this year.

The MTPT Project - Support for Maternity, Paternity and Adoption Returners to Continue!

Colleagues working in schools across the South East will continue to benefit from MTPT Project workshops and coaching whilst on maternity leave and as they return to work, thanks to ongoing support from TSH Berkshire.

Throughout next academic year, teachers, leaders and support staff returning from parental leave can attend a 90 minute virtual Return to Work workshop ahead of their return - **fully funded!**

Colleagues taking a period of maternity, adoption or shared parental leave can also enjoy fully-funded virtual group coaching, with five cohorts running next year.

This year, **more than 200 parent-teacher colleagues** across England have benefitted from these programmes, supporting them to balance work and family life.

Find out the date of the best Return to Work workshop or Parental Leave group coaching cohort for you and your staff on Eventbrite:

- ➡ Click [here](#) for Return to Work workshops
- ➡ Click [here](#) for Parental Leave group coaching programme.



for your time from the TSH Berkshire Team

